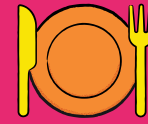
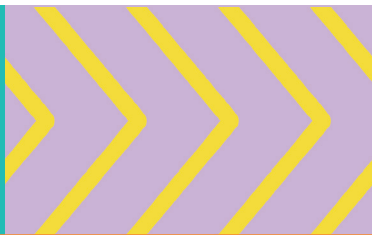


Track Your Growing Journey Here



CONNECTED LIBRARIES



Type / variety of seed

Date planted & quantity

Location

Month harvested

How much did you harvest?

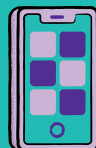
Seeds collected (Yes/No)

Seeds donated (Yes/No)



Seed Library

connectedlibraries.org.au/seedlibrary



1800 577 548

connectedlibraries.org.au



Seed Library

Would you like to start your own edible garden at home?

Drop into your local library, pick up some seeds and start growing your own food for free. You can also donate your saved seeds back to the library.

The Seed Library gives you:

- Access to fresh, healthy food and healthy ways of eating
- Knowledge of growing food
- Information on plants to share with friends and family
- Free programs to teach skills in growing and using fresh food

How Does the Seed Library Work?



Borrow

- The Seed Library is free for CL members to join. Simply ask a staff member at one of our libraries and we will sign you up to the Seed Library. If you aren't already a library member, it's free to join online or in the library
- You can have up to 6 packets of seeds per season
- There will be multiple different seeds to choose from each season
- The seeds will be a range of vegetables, herbs and flowers



Grow

- Grow your seeds at home
- Watch them grow and enjoy eating your own home-grown food!



Donate

- Save seeds from your plants
- Donate these seeds back to the library so they can be shared with someone else
- Help the Seed Library be sustainable by donating other seed types you might have at home.



BORROW



DONATE



GROW

More Information

We have information on our website to help you:

- Grow plants
- Cook with fresh produce
- Save seeds
- Make your own origami seed packets



connectedlibraries.org.au/seedlibrary

